

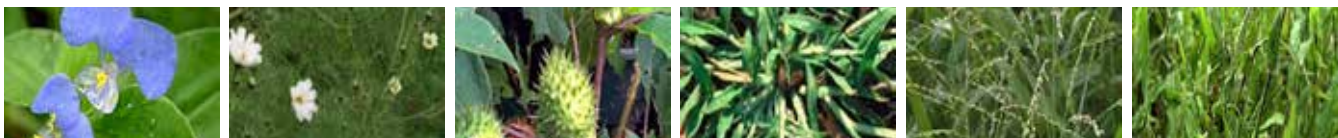
# PALLADIUM ULTRA 660 SC



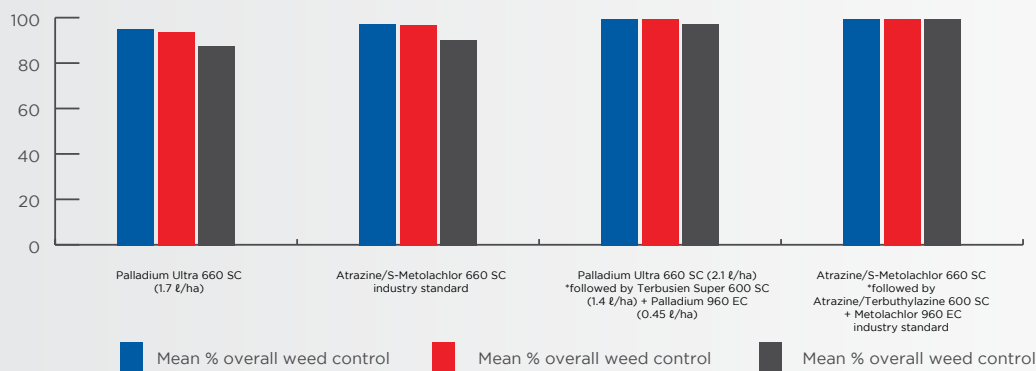
Active ingredient: Atrazine (triazine) 370 g/l + s-metolachlor (chloroacetanilide) 290 g/l + benoxacor (safener) 10.2 g/l

A suspension concentrate herbicide with benoxacor for selective control of most annual broadleaf weeds as well as grasses in maize

HERBICIDE



Summary of 3 trials showing the performance of PALLADIUM ULTRA 660 SC in controlling numerous weeds when applied pre-emergently in maize fields. The graphs shows the mean percentage overall weed control (6 different weed species) at 21, 42 and 64 days after treatment (DAT) respectively.



## Features

- PALLADIUM ULTRA 660 SC is a HRAC Group C1+H3 herbicide
- Contains two active ingredients with two modes of action
- Selective systemic herbicide
- Absorbed through the roots and the leaves
- Contains a safener (benoxacor)
- Inhibits photosynthesis
- Ideal for resistance management strategy
- Safe to be used in maize pre-plant
- Good tank-mix partner

## Label recommendations

Dosage rate:

- 1.5 - 2.5 l/ha
- Refer to label for dosage recommendations for soil clay percentages and tank-mix partners

## Do's and don'ts

- Apply PALLADIUM ULTRA 660 SC at post-emergence, if broad-leaved weeds have not developed beyond the 4-leaf stage and grasses have not yet emerged
- At post emergence, add a suitable surfactant, e.g. Villa 51, into the spray mixture
- Apply at a maximum rate of 2.7 l/ha
- Take note of carry-over risk in crop rotation systems on sandy soils

ALWAYS READ THE LABEL BEFORE USE

PALLADIUM ULTRA 660 SC Active ingredient: Atrazine (triazine) 370 g/l + s-metolachlor (chloroacetanilide) 290 g/l + benoxacor (safener) 10.2 g/l, Reg. No. L9922 (harmful), Act 36 of 1947  
Registration holder: Villa Crop Protection (Pty) Ltd., Co. Reg. No. 1992/002474/07, PO Box 10413, Aston Manor, 1630. Tel. (011) 396-2233

[www.villacrop.co.za](http://www.villacrop.co.za)

